

Clara's 1930s Pajamas

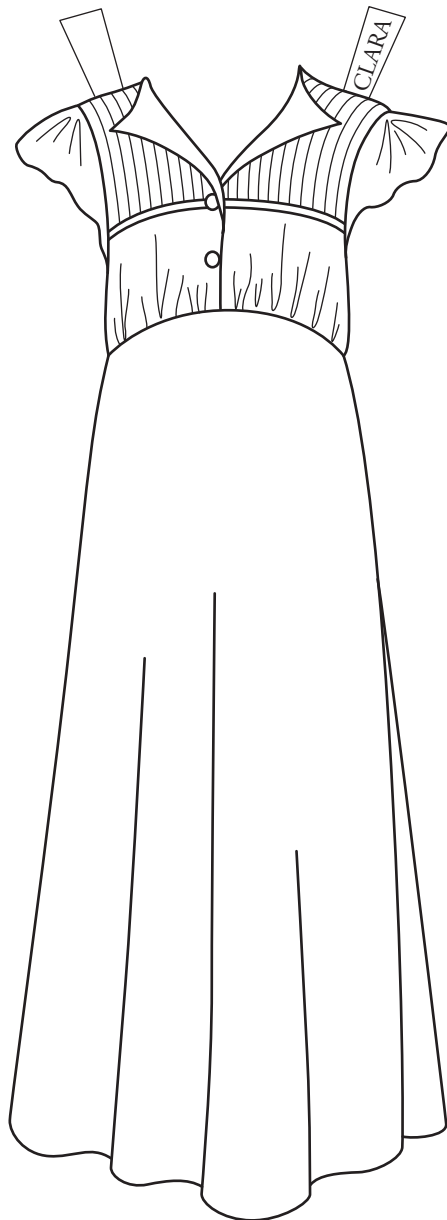
In the 1920s, lounge pajamas were quite fashionable as beachwear, worn to cover a bathing suit. As the decade progressed, pajamas were worn as day wear and even worn to parties. By the 1930s, movie actresses had made pajamas into a popular fashion choice for day or night.

Clara's pajamas are quite stylish, with a short-sleeved tunic top, tied with a soft silky bow, worn over soft, loose pants.

Clara also has a long nightgown with butterfly sleeves and a high, curved waistline. Pinch pleats and piping trim the yoke and add a nice stylish accent.

PAPER DOLLS BY

MELINDA BOWERS



Cut on the dotted lines, but do not fold the tabs. These dotted line tabs tuck under the arms to hold the top securely.

