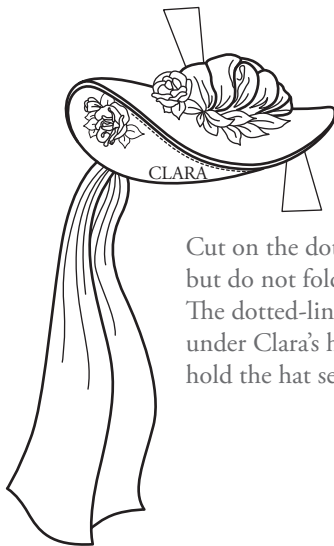


# Clara's 1877 Walking Dress

Clara's walking dress is very typical of the 1870s, with heavy drapery style decorations. A walking dress was meant to be worn while strolling along outdoors, shopping, or doing any number of daytime activities that included being seen in public. Worn to impress others, walking dresses were generally more elaborate ensembles than a regular day dress. Clara's dress for today has a pleated underskirt with an overskirt drawn up the side seams to form drapes. A ruffled yoke dresses up the high-collared bodice. For footwear, Clara has some tall boots with square toes. To finish off the outfit, Clara has a straw hat with ribbons on the crown, roses for trim, and a drapy scarf.

PAPER DOLLS BY

MELINDA BOWERS



Cut on the dotted line, but do not fold the tab. The dotted-line tab tucks under Clara's head to hold the hat securely.

