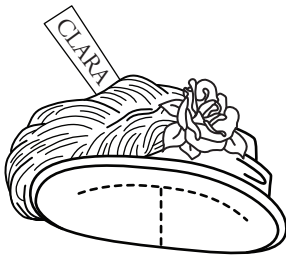
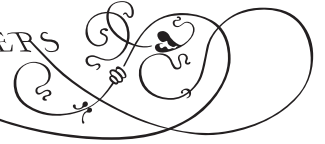


Clara's 1883 Winter Coat

In the 1880s velvet, satin and decorative brocade became more popular than the taffeta and cotton which had been used previously. Clara's winter coat is made from the heavy fabric popular in the decade, and is the correct length for a proper young lady. Clara is too young to wear a full-length gown over a bustle, but this coat would have accommodated a small, abbreviated bustle if Clara's dress had one. Pleats had become very popular, and Clara's dress has a row of tiny pleats at the hem. The boots and stockings will help keep Clara warm. Last of all, Clara's outfit is finished off with a fashionable narrow-brimmed hat with an silk ribbons, an ostrich plume, and a rose.

PAPER DOLLS BY

MELINDA BOWERS



Cut on the dotted lines, but do not fold the tabs. These dotted-line tabs tuck under Clara's head to hold the hat securely.

