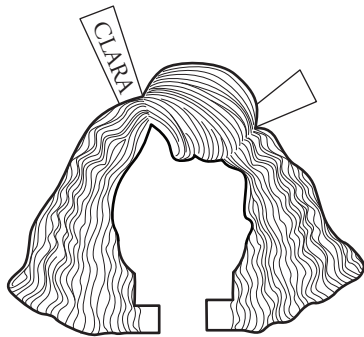


# Clara's Square Collar Dress

Clara's dress is a classic style from the late 1980s. Although very conservative compared to the punk rock and gothic fashions, this outfit represents the new romantic movement: lace, flowers, classic lines. The lacy scalloped edges of the bodice and sleeves complement the similarly scalloped edges of the square collar. Clara's shoes are some simple slip-ons with low heels and square toes. And finally, "big hair" was the hallmark of the 80s, so Clara has some frizzy, permed hair with stiff, hairsprayed bangs.

PAPER DOLLS BY

MELINDA BOWERS



The square tabs tuck under Clara's neck to hold the hair securely.

