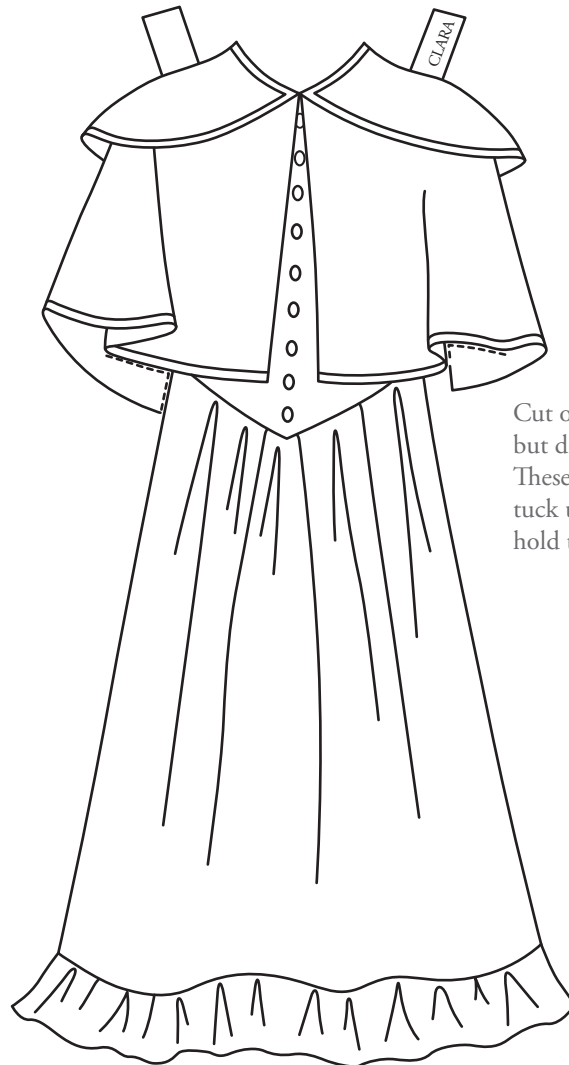
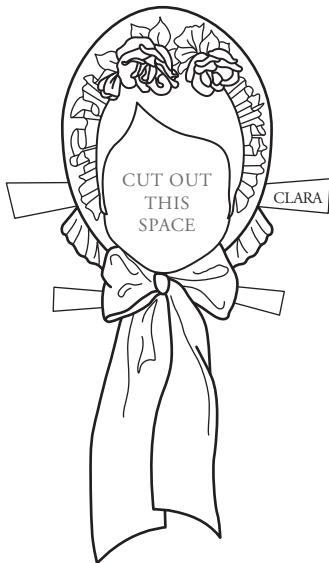


# Clara's Half-Cape and Dress

Clara is dressed for chilly weather with this beautiful cape, flowered bonnet, and button-up boots. This particular outfit is from about 1850-1855. The Victorian half cape became popular during this decade. The dress is a practical day dress, meant for work. The boots are a sturdy leather, but they are beautifully made with scalloped edges. The bonnet completes the ensemble, with silk roses and trim.

PAPER DOLLS BY  
MELINDA BOWERS



Cut on the dotted lines, but do not fold the tabs. These dotted-line tabs tuck under the arms to hold the dress securely.

